

Sentencing trends for common assault, 2007-2017^{1,2}

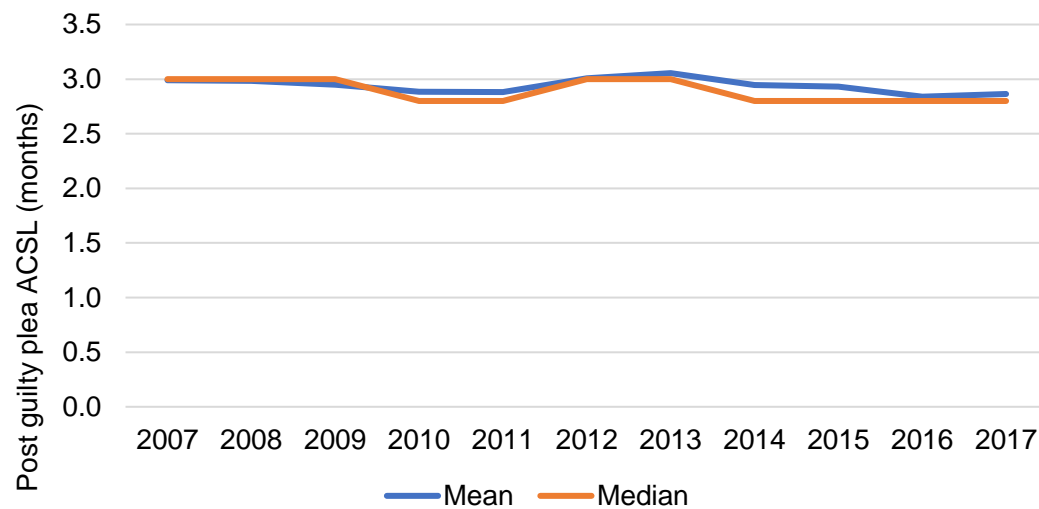
Proportion of adult offenders sentenced for common assault, by sentence outcome, all courts, 2007-2017

Outcome	2007	2008	2009	2010	2011	2012	2013	2014	2015	2016	2017
Absolute and conditional discharge	20%	16%	13%	15%	15%	15%	15%	16%	15%	15%	14%
Fine	11%	11%	12%	11%	13%	14%	14%	15%	16%	16%	16%
Community sentence	42%	44%	46%	45%	43%	42%	39%	37%	39%	38%	39%
Suspended sentence	10%	10%	12%	12%	12%	11%	12%	12%	13%	14%	14%
Immediate custody	14%	15%	15%	14%	15%	15%	14%	14%	14%	14%	14%
Otherwise dealt with	4%	4%	2%	3%	3%	3%	5%	5%	3%	3%	3%

¹ Source: Court Proceedings Database, Ministry of Justice

² Excludes youths, section 29 offences (racially/religiously aggravated), and custodial sentences of over 6 months (the statutory maximum for this offence)

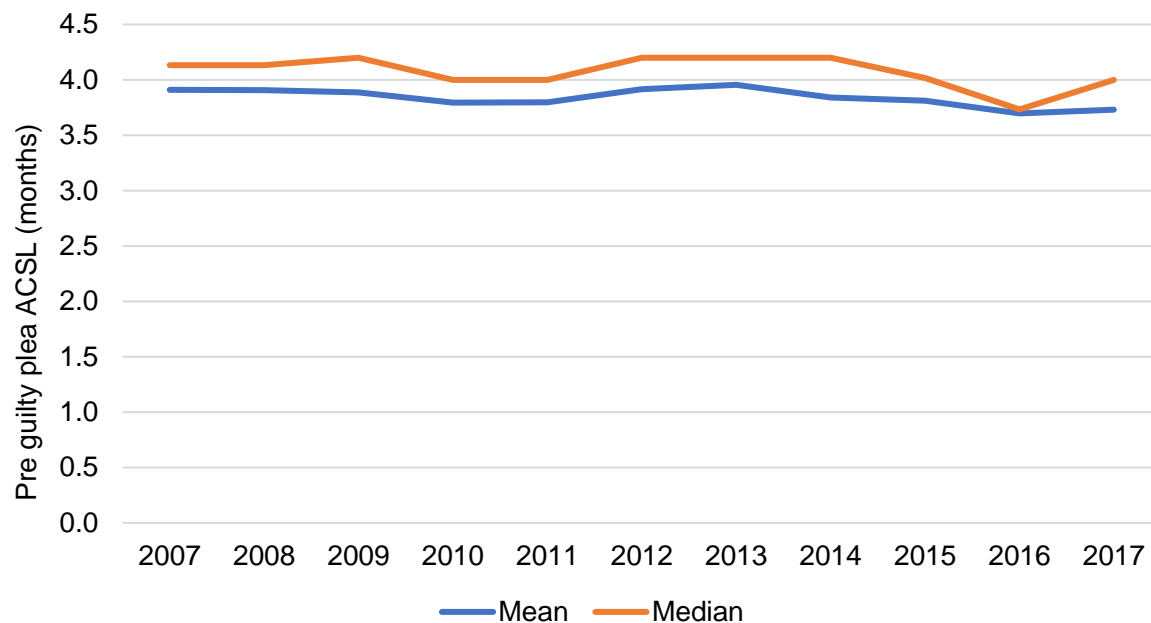
Post guilty plea average custodial sentence lengths (ACSLs) received by adult offenders sentenced to immediate custody for common assault, all courts, 2007-2017



Post guilty plea sentence length bands received by adult offenders sentenced to immediate custody for common assault, all courts, 2007-2017

Sentence length band	2007	2008	2009	2010	2011	2012	2013	2014	2015	2016	2017
1 month or less	13%	13%	12%	13%	14%	13%	13%	14%	14%	16%	16%
Between 1 and 2 months	22%	21%	21%	22%	21%	19%	18%	20%	20%	21%	21%
Between 2 and 3 months	24%	23%	25%	25%	24%	23%	22%	22%	22%	23%	21%
Between 3 and 4 months	27%	27%	26%	24%	24%	25%	25%	23%	22%	21%	21%
Between 4 and 5 months	8%	10%	11%	10%	11%	13%	13%	13%	13%	12%	13%
Between 5 and 6 months	6%	6%	6%	5%	6%	8%	9%	8%	8%	8%	8%

Estimated pre guilty plea average custodial sentence lengths (ACSLs) received by adult offenders sentenced to immediate custody for common assault, all courts, 2007-2017



Estimated pre guilty plea sentence length bands received by adult offenders sentenced to immediate custody for common assault, all courts, 2007-2017

Sentence length band	2007	2008	2009	2010	2011	2012	2013	2014	2015	2016	2017
1 month or less	4%	4%	5%	5%	5%	5%	4%	5%	5%	6%	7%
Between 1 and 2 months	14%	13%	13%	13%	14%	13%	12%	14%	14%	15%	14%
Between 2 and 3 months	20%	20%	19%	20%	21%	17%	18%	19%	19%	20%	19%
Between 3 and 4 months	12%	12%	12%	12%	12%	12%	12%	11%	12%	11%	11%
Between 4 and 5 months	19%	19%	20%	20%	20%	20%	19%	20%	18%	19%	18%
Between 5 and 6 months	31%	32%	31%	29%	29%	33%	34%	32%	32%	29%	31%

Blank page