

Sentencing trends for common assault and ABH, 2007-2017^{1,2}

Proportion of adult offenders sentenced for common assault, by sentence outcome, all courts, 2007-2017³

Outcome	2007	2008	2009	2010	2011	2012	2013	2014	2015	2016	2017
Absolute and conditional discharge	20%	16%	13%	15%	15%	15%	15%	16%	15%	15%	14%
Fine	11%	11%	12%	11%	13%	14%	14%	15%	16%	16%	16%
Community sentence	42%	44%	46%	45%	43%	42%	39%	37%	39%	38%	39%
Suspended sentence	10%	10%	12%	12%	12%	11%	12%	12%	13%	14%	14%
Immediate custody	14%	15%	15%	14%	15%	15%	14%	14%	14%	14%	14%
Otherwise dealt with	4%	4%	2%	3%	3%	3%	5%	5%	3%	3%	3%

Proportion of adult offenders sentenced for ABH, by sentence outcome, all courts, 2007-2017

Outcome	2007	2008	2009	2010	2011	2012	2013	2014	2015	2016	2017
Absolute and conditional discharge	4%	3%	2%	2%	2%	2%	1%	1%	1%	1%	1%
Fine	3%	2%	2%	1%	2%	2%	1%	1%	1%	1%	1%
Community sentence	32%	32%	31%	32%	30%	23%	20%	17%	16%	15%	15%
Suspended sentence	28%	30%	31%	31%	31%	34%	36%	38%	41%	39%	38%
Immediate custody	29%	31%	32%	31%	34%	38%	40%	41%	39%	40%	42%
Otherwise dealt with	4%	3%	2%	2%	2%	1%	2%	2%	2%	2%	2%

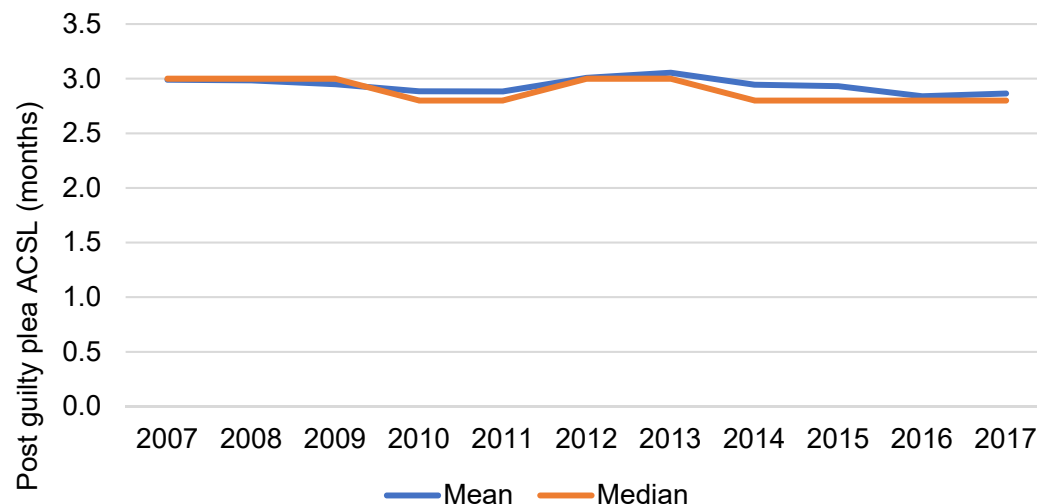
¹ Source: Court Proceedings Database, Ministry of Justice

² Excludes youths, section 29 offences (racially/religiously aggravated), and custodial sentences of over 6 months for common assault, and over 5 years for ABH (the statutory maximum sentences for these offences)

³ Percentages may not add up to 100 per cent, due to rounding.

Common assault sentence lengths

Post guilty plea average custodial sentence lengths (ACSLs) received by adult offenders sentenced to immediate custody for common assault, all courts, 2007-2017

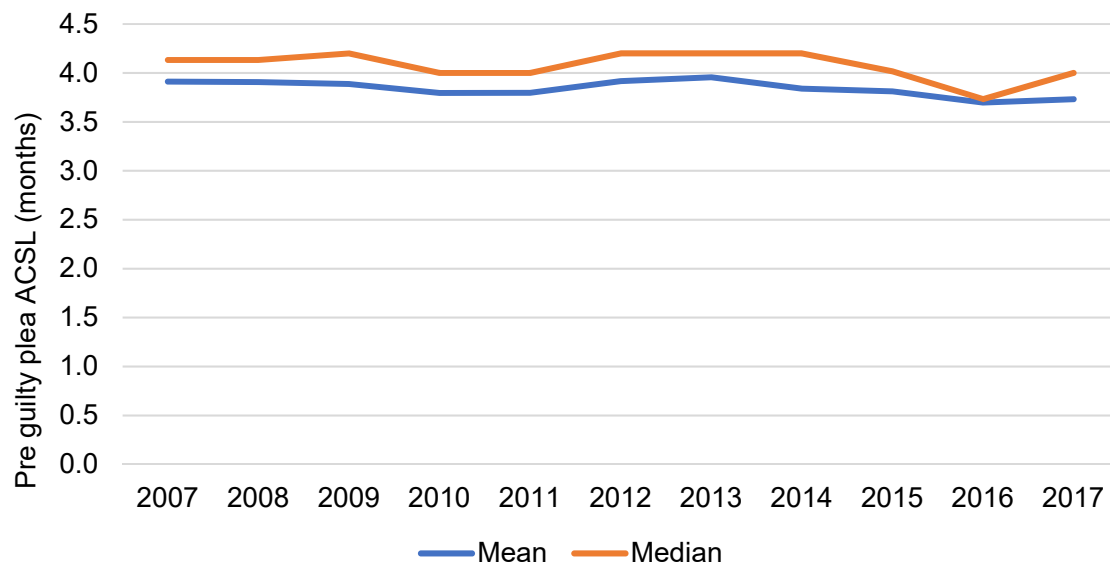


Post guilty plea sentence length bands received by adult offenders sentenced to immediate custody for common assault, all courts, 2007-2017⁴

Sentence length band	2007	2008	2009	2010	2011	2012	2013	2014	2015	2016	2017
1 month or less	13%	13%	12%	13%	14%	13%	13%	14%	14%	16%	16%
Between 1 and 2 months	22%	21%	21%	22%	21%	19%	18%	20%	20%	21%	21%
Between 2 and 3 months	24%	23%	25%	25%	24%	23%	22%	22%	22%	23%	21%
Between 3 and 4 months	27%	27%	26%	24%	24%	25%	25%	23%	22%	21%	21%
Between 4 and 5 months	8%	10%	11%	10%	11%	13%	13%	13%	13%	12%	13%
Between 5 and 6 months	6%	6%	6%	5%	6%	8%	9%	8%	8%	8%	8%

⁴ Sentence length bands do not include the lower bound, but do include the upper bound sentence length. For example, the category '1 month or less' includes sentence lengths less than and equal to 1 month, and 'Between 1 and 2 months' includes sentence lengths over 1 month, and up to and including 2 months.

Estimated pre guilty plea average custodial sentence lengths (ACSLs) received by adult offenders sentenced to immediate custody for common assault, all courts, 2007-2017



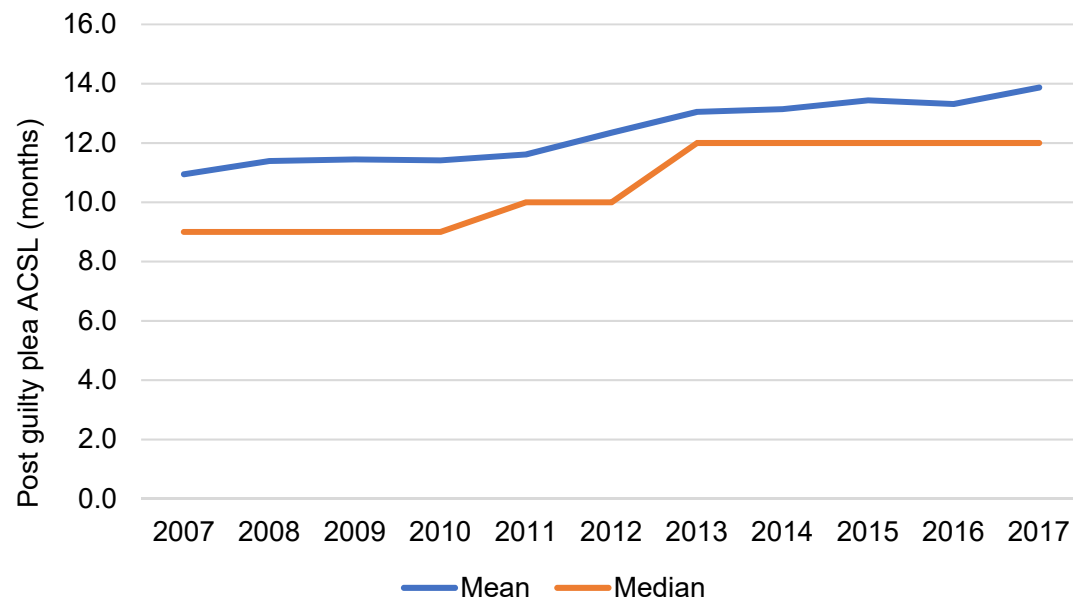
Estimated pre guilty plea sentence length bands received by adult offenders sentenced to immediate custody for common assault, all courts, 2007-2017⁵

Sentence length band	2007	2008	2009	2010	2011	2012	2013	2014	2015	2016	2017
1 month or less	4%	4%	5%	5%	5%	5%	4%	5%	5%	6%	7%
Between 1 and 2 months	14%	13%	13%	13%	14%	13%	12%	14%	14%	15%	14%
Between 2 and 3 months	20%	20%	19%	20%	21%	17%	18%	19%	19%	20%	19%
Between 3 and 4 months	12%	12%	12%	12%	12%	12%	12%	11%	12%	11%	11%
Between 4 and 5 months	19%	19%	20%	20%	20%	20%	19%	20%	18%	19%	18%
Between 5 and 6 months	31%	32%	31%	29%	29%	33%	34%	32%	32%	29%	31%

⁵ Sentence length bands do not include the lower bound, but do include the upper bound sentence length. For example, the category '1 month or less' includes sentence lengths less than and equal to 1 month, and 'Between 1 and 2 months' includes sentence lengths over 1 month, and up to and including 2 months.

ABH sentence lengths

Post guilty plea average custodial sentence lengths (ACSLs) received by adult offenders sentenced to immediate custody for ABH, all courts, 2007-2017

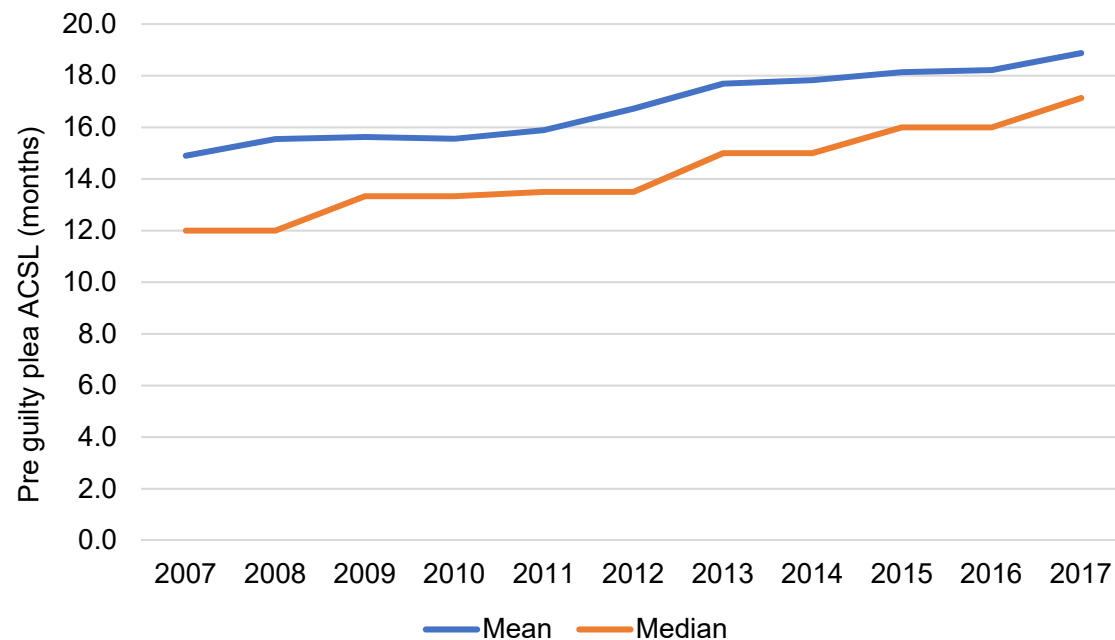


Post guilty plea sentence length bands received by adult offenders sentenced to immediate custody for ABH, all courts, 2007-2017⁶

Sentence length band	2007	2008	2009	2010	2011	2012	2013	2014	2015	2016	2017
1 year or less	71%	70%	69%	70%	69%	65%	60%	59%	58%	57%	55%
Between 1 and 2 years	24%	25%	25%	26%	26%	29%	33%	34%	35%	35%	36%
Between 2 and 3 years	4%	5%	5%	4%	4%	5%	6%	6%	6%	7%	8%
Between 3 and 4 years	1%	1%	1%	1%	1%	1%	1%	1%	1%	1%	1%
Between 4 and 5 years	<0.5%	<0.5%	<0.5%	<0.5%	<0.5%	<0.5%	<0.5%	<0.5%	<0.5%	<0.5%	<0.5%

⁶ Sentence length bands do not include the lower bound, but do include the upper bound sentence length. For example, the category '1 year or less' includes sentence lengths less than and equal to 1 year, and 'Between 1 and 2 years' includes sentence lengths over 1 year, and up to and including 2 years.

Estimated pre guilty plea average custodial sentence lengths (ACSLs) received by adult offenders sentenced to immediate custody for ABH, all courts, 2007-2017



Estimated pre guilty plea sentence length bands received by adult offenders sentenced to immediate custody for ABH, all courts, 2007-2017⁷

Sentence length band	2007	2008	2009	2010	2011	2012	2013	2014	2015	2016	2017
1 year or less	51%	50%	49%	48%	46%	43%	38%	38%	37%	37%	37%
Between 1 and 2 years	34%	33%	35%	37%	38%	40%	43%	42%	42%	42%	38%
Between 2 and 3 years	12%	12%	12%	12%	12%	13%	15%	15%	17%	15%	19%
Between 3 and 4 years	2%	3%	3%	2%	2%	3%	4%	4%	4%	5%	5%
Between 4 and 5 years	1%	2%	1%	1%	1%	1%	1%	2%	1%	1%	1%

⁷ Sentence length bands do not include the lower bound, but do include the upper bound sentence length. For example, the category '1 year or less' includes sentence lengths less than and equal to 1 year, and 'Between 1 and 2 years' includes sentence lengths over 1 year, and up to and including 2 years.

Crown Court Sentencing Survey data for ABH offences, 2013 - 2015 (Q1)^{8,9}

Sentence table in Sentencing Council ABH definitive guideline

Offence Category	Starting Point <i>(Applicable to all offenders)</i>	Category Range <i>(Applicable to all offenders)</i>
Category 1	1 year 6 months' custody	1 – 3 years' custody
Category 2	26 weeks' custody	Low level community order – 51 weeks' custody
Category 3	Medium level community order	Band A fine – High level community order

Proportion of offenders placed in each offence category, Crown Court Sentencing Survey

Offence category	2013	2014	2015 Q1
	(n=3,422)	(n=3,781)	(n=932)
Level 1 (most serious)	37%	39%	42%
Level 2	54%	53%	50%
Level 3 (least serious)	9%	9%	8%
Total	100%	100%	100%



Around half of offenders sentenced in the Crown Court are placed within the middle category of seriousness. Over time there's been a shift towards more offenders being placed in the highest category.

Proportion of offenders receiving each sentence outcome: Offence category 1 (most serious), Crown Court Sentencing Survey

Sentence outcome	2013	2014	2015 Q1
	(n=1,263)	(n=1,457)	(n=392)
Immediate custody	73%	68%	61%
SSO	25%	30%	36%
CO	2%	2%	3%
Conditional discharge	0%	0%	0%
Other	0%	0%	0%
Total	100%	100%	100%

⁸ Source: Crown Court Sentencing Survey, 2011-2015 (Q1)

⁹ Excludes youths, section 29 offences (racially/religiously aggravated), and custodial sentences of over 5 years (the statutory maximum sentence for this offence)

Proportion of offenders receiving each sentence outcome: Offence category 2 (middle category), Crown Court Sentencing Survey

Sentence outcome	2013	2014	2015 Q1
	(n=1,847)	(n=1,997)	(n=464)
Immediate custody	34%	36%	30%
SSO	49%	49%	53%
CO	16%	14%	16%
Fine	0%	0%	0%
Conditional discharge	0%	0%	0%
Absolute discharge	0%	0%	0%
Other	0%	1%	1%
Total	100%	100%	100%

Proportion of offenders receiving each sentence outcome: Offence category 3 (least serious), Crown Court Sentencing Survey

Sentence outcome	2013	2014	2015 Q1
	(n=312)	(n=327)	(n=76)
Immediate custody	12%	17%	13%
SSO	23%	30%	30%
CO	54%	42%	39%
Fine	4%	5%	5%
Conditional discharge	6%	6%	12%
Absolute discharge	0%	1%	0%
Other	1%	0%	0%
Total	100%	100%	100%



On average, around 40% of offenders in category 3 received a custodial sentence (immediate custody or SSO), which isn't in this category range.

Post guilty plea mean ACSLs for offenders sentenced to immediate custody, Crown Court Sentencing Survey

Offence category	ACSL in years		
	2013	2014	2015 Q1
Level 1 (most serious)	1.5	1.5	1.5
Level 2	0.8	0.8	0.8
Level 3 (least serious)	0.7	0.6	0.6

Estimated pre guilty plea mean ACSLs for offenders sentenced to immediate custody, Crown Court Sentencing Survey

Offence category	ACSL in years		
	2013	2014	2015 Q1
Level 1 (most serious)	2.0	2.0	2.0
Level 2	1.1	1.1	1.0
Level 3 (least serious)	0.9	0.7	0.8